

## AVIATION SECURITY SCREENING COURSE

Written in consultation with the ICAO representatives at a number of major airports, the course is designed to train a newly recruited pre-board passenger screening checkpoint operator to work in accordance with ICAO standards and practices. The course covers all aspects of the duties of a checkpoint officer including:

- Walk-through metal detectors
- Hand-held metal detectors
- Consent searches
- Trace detection
- X-ray interpretation

The ICAO course is approximately 12 hours in duration, it has five modules and a series of question and answer tests to reinforce learning and measure attainment levels. The course design allows each user to progress at his or her own pace; it can be interrupted at any time and resumed from the same point at a later date. Each user has their own login and password, attainment scores are stored centrally and can be analysed using a report tool.



Wherever possible the modules follow the Tel-Show-Do sequence which reinforces learning by having trainees practice what they have just learnt.

The course design allows for any element to be modified or removed, new modules or elements may be written and added. This enables security/training managers to revise the course in response to changes stipulated by their own regulatory authorities.

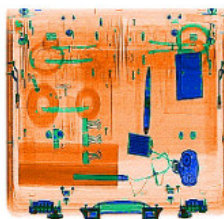
### Introduction

This module gives an introduction to the course, the legal basis for passenger screening and a screening officer's duties and responsibilities at the checkpoint. It describes some past security incidents to enable screening officers to understand the importance of their task. At the end of the module there is a quiz with 16 randomly generated questions to aid the user to check the level of learning.



### Identifying the threat

Users are taught about the four categories used for screening: Non-threats; possible threats; definite threats and dangerous goods and what kinds of items are associated with each. They are instructed as to what action to take should a threat item or dangerous goods be identified. A series of interactive exercises in this module help users recognise non-threat, definite threat, possible threat and dangerous items together with their corresponding x-ray images. There are also five tests, one at the end of each sub-module.



## Screening the Passenger

The various methods for screening a passenger prior to them boarding an aircraft are addressed in this module. These are:

- walk-through metal detector
- hand-held metal detector
- consent search

The correct practice, supported with video clips, for using each method is covered in detail. Appropriate ways to deal with atypical passengers such as those with disabilities, carrying diplomatic bags, wearing religious clothing, authorised to carry firearms etc. are reviewed.

The actions to take in the event that an alarm cannot be resolved, a passenger refuses some element of the screening procedure, becomes aggressive or flees from the checkpoint are covered. Each sub-module concludes with a test, there are six in all.



## Hand-Carried Items

This module describes how to screen passengers' hand-carried items using X-ray screening equipment and the safe operation of X-ray equipment is discussed. A series of exercises to practice conveyor belt control, use of the zoom function and image enhancement tools for the Heimann 6040 and a Rapiscan 500 series x-ray machine.



Plug-in x-ray simulators for L3 Linescan 200 series, L3 PX-M, Heimann 6040i and Rapiscan 500 series **cargo** machines are available to complement the course.

The procedure for conducting a physical bag search in the event that a bag is suspected to contain a possible threat is demonstrated, the importance of noting objects which seem out of place or abnormally heavy is emphasized. The use of trace detection as a part of the



search of suspect items in a bag is reviewed this includes swabbing procedure and how to analyse a swab using typical trace detection equipment. Possible scenarios are explored covering both innocent reasons why an alarm may be triggered and what action to take when a security officer is not comfortable with the passenger's explanation. There are four tests in this module.

## SmartScreen Trainer

The Smart Approach X-ray screening machine simulator is introduced and the trainee is shown a typical simulation session followed by a review.