

SmartApproach

Specialists in High-Tech Security Training

Smart Screen Cargo Simulator

Inappropriately packed and undeclared dangerous goods have been the cause of major aviation incidents, such as the fire that broke out on ValuJet flight 592 causing it to crash into the Florida Everglades killing all on board. It is recognised that air cargo consignments are of interest to terrorists for the shipment of illicit goods to or the concealment of an explosive device intended to bring down the aircraft. Authorities are responding to the situation by requiring an increasing proportion of cargo to be passed through x-ray screening equipment.

It has become the responsibility of the carrier or its agent to provide adequate, ongoing training of x-ray screener operators. The Smart screen cargo simulator is an important component in that training by providing near perfect simulation of the X-ray equipment through computer-based training techniques. SmartSystem can be used as part of the induction training of new employees and for periodic re-training to maintain the highest performance levels.

Smart Screen has been developed by UK Department for Transport approved Security, Firearms and Explosives trainers. Surveys have shown a 70% improvement in screener performance where SmartScreen forms a major part of a screener training program.



Using computer-based techniques, SmartScreen allows an x-ray operator to be exposed to a large number of x-ray images of cargo items many of which contain security threats such as improvised explosive devices (IEDs). Real items of cargo are passed through the cargo x-ray screener and the images captured using SmartApproach's technology. The resulting library of images is almost indiscernible from those produced by the x-ray machine including all strip options and other enhancements such as inverse, crystal clear and high power. SmartScreen will run on any reasonable modern PC running under Windows XP, several

networked PCs may be used to form a CBT classroom.

What constitutes a threat in the air cargo environment is can dictated by the content of the accompanying paperwork. A consignment of detonators accompanied by the appropriate dangerous goods declaration may be cleared by screeners while another similar consignment lacking the appropriate paperwork should be subjected to further investigation.

The trainee is presented with a sequence of x-ray images of cargo items plus a representation of the x-ray machine control panel. Pressing the various



SmartApproach

Specialists in High-Tech Security Training

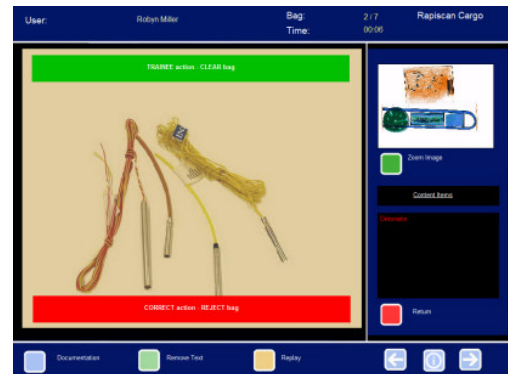
Smart Screen Cargo Simulator

control keys on the panel using the mouse allows the various image enhancement functions to be activated exactly as they are on the x-ray equipment.

The trainee can also see a simplified version of the accompanying documents showing the air waybill and any dangerous goods declaration. The student has the choice to clear the item of cargo, reject it because of incorrect paperwork or reject it because of a threat item. The rejection process includes specifically identifying the item of concern and its location in the consignment.

At the end of a sequence of cargo of typically 20 – 30 cargo items (duration selected by trainer) there follows a session review with each item being revisited. The trainee's decision to reject or clear the item is compared to the correct decision and reasons provided. An opportunity is provided to view any threat item and compare the x-ray image with a photograph.

An on screen high level report indicates to the trainee whether they have passed or failed the session and where they have made errors.



Every trainee has their own individual log in, the system records their performance scores from every session allowing the trainer to issue certification, or where appropriate identify weaknesses and assist the trainee to improve their skills in further training sessions.

These records also provide evidence in the event of a security audit or investigation following an incident.

SmartApproach

Specialists in High-Tech Security Training

Office Suite 2 Alexandra Dock Business centre, Grimsby, N.E. Lincolnshire,
DN31 1UL, United Kingdom.

Tel: +44 1472 722170 Fax: +44 1472 720010

Email: info@smartapproach.com www.smartapproach.com